

ALLEN COMMUNITY COLLEGE  
BOARD OF TRUSTEES  
POLICIES AND PROCEDURES

II-A-1.2

ORGANIZATIONAL CHART

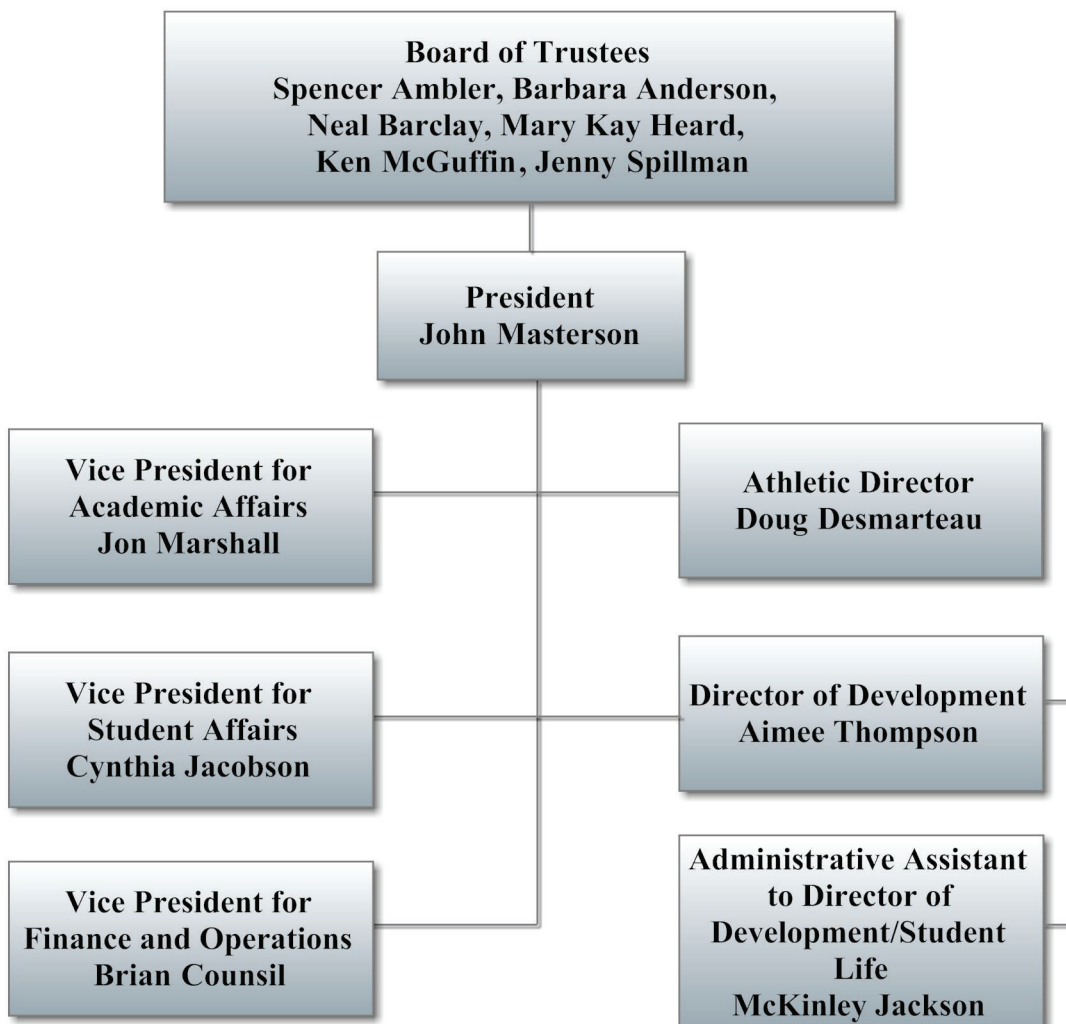
1.00 General Statements

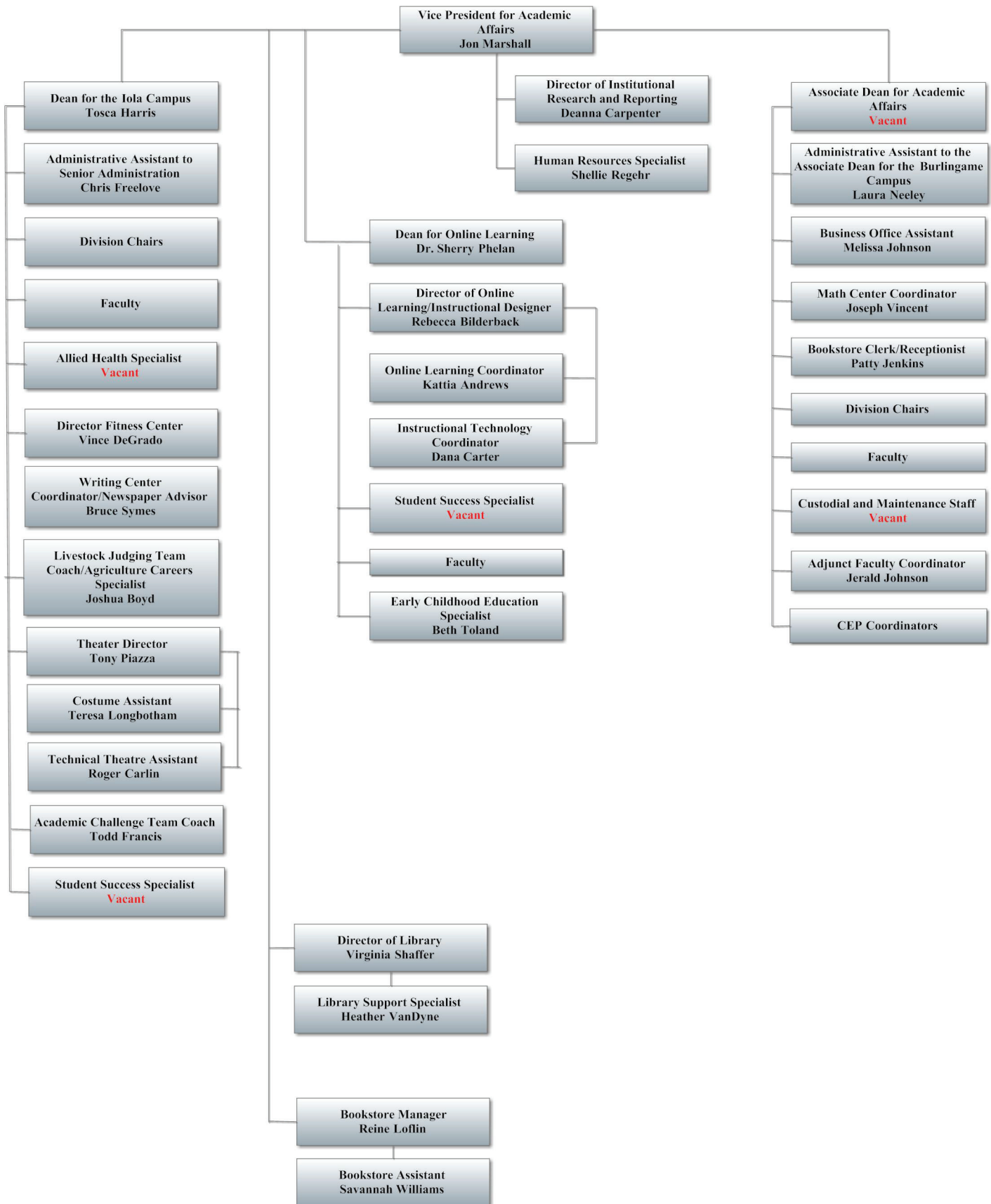
1.01 The Allen Community College Organizational Chart is presented as follows:

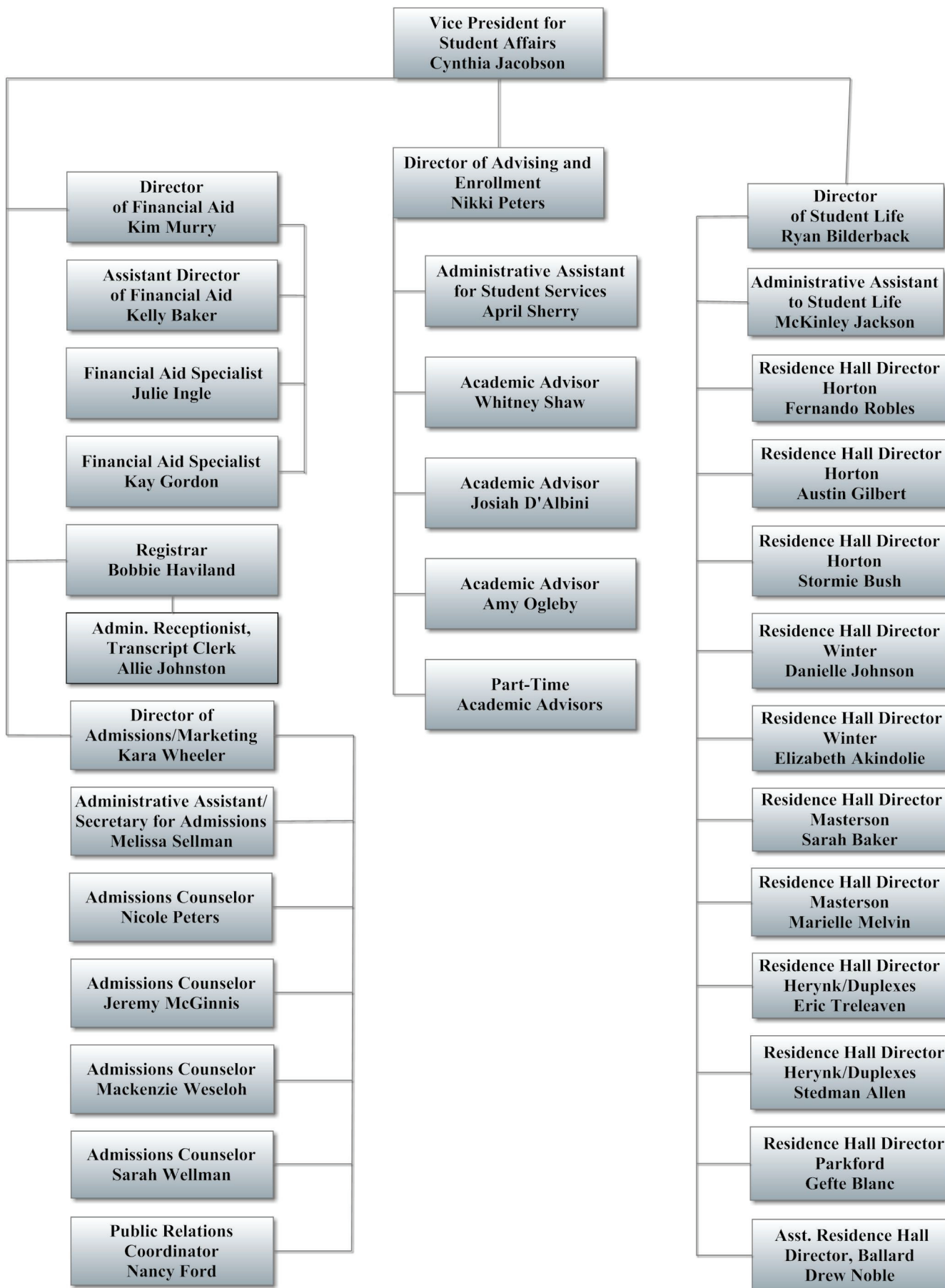
- A. Direct Presidential Reporting
- B. Academic Affairs
- C. Student Affairs
- D. Finance and Operations
- E. Athletics

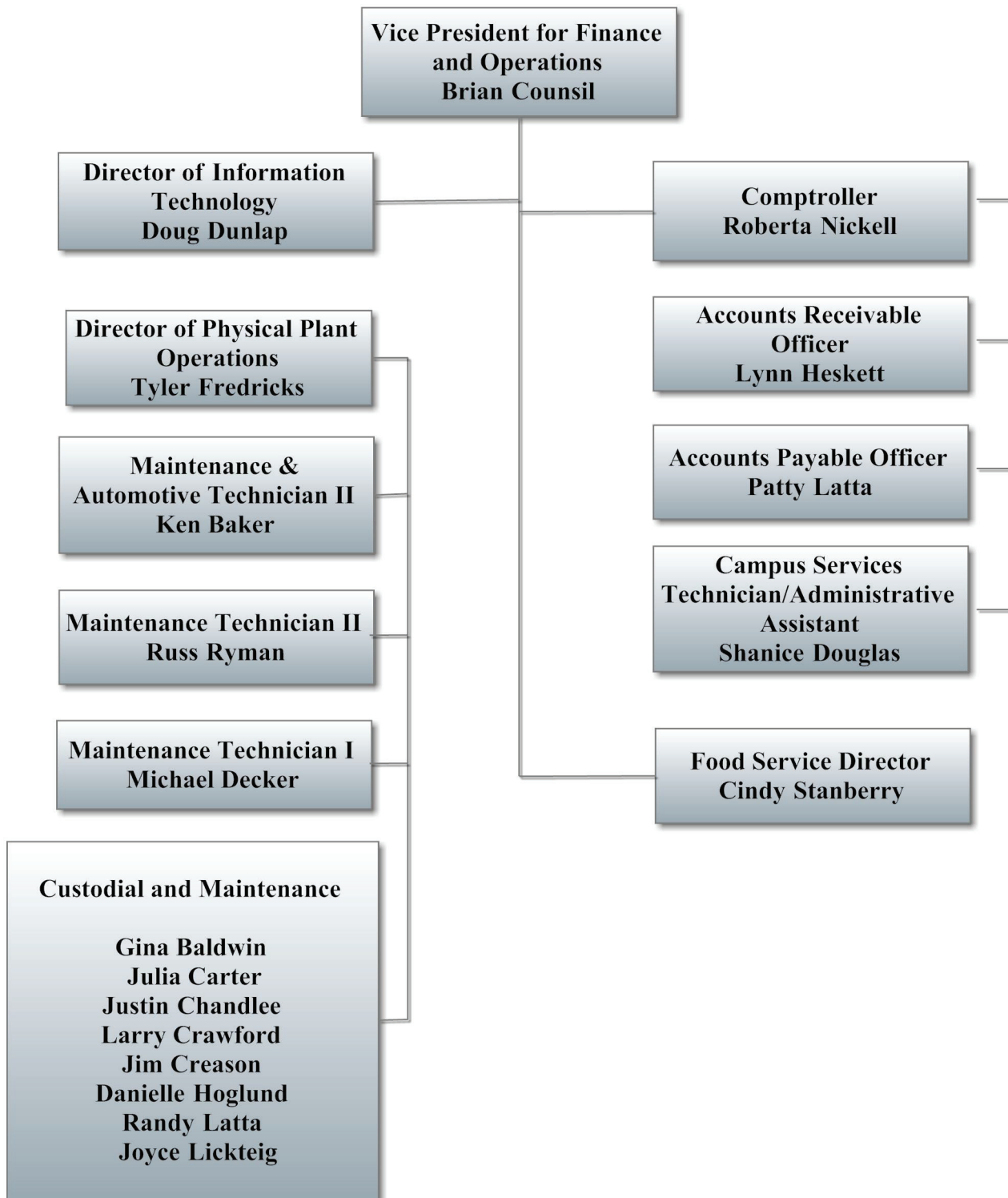
2.00 Specific Statements

A. Direct Presidential Reporting









**E. Athletics**

**II-A-1.2**

